

file

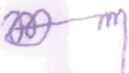
step-5


**GIS & REMOTE SENSING DIVISION
DEPARTMENT OF FOREST RESEARCH AND DEVELOPMENT
FORESTRY DEVELOPMENT AUTHORITY**

Whein Town, Mount Barclay
Montserrado County, Liberia

INTERNAL MEMORANDUM

TO : Hon. Joseph J. Tally
DMD/ Operations
FDA

THRU : Mr. Mitchell S. Kumbelay 
TM/ R & D

FROM : Whymah M. Goyanvator 
Manager
GIS and Remote Sensing Division

SUBJ : **Report on the Validation Conducted in Tonlay Community
Forest, Kongba District, Gbarpolu County**

DATE : August 27, 2018

We extend compliments and write to submit to you findings from the validation conducted in
Tonglay Community Forest, Kongba District, Gbarpolu County.

Please find attached.

Best regards.

Cc. FILE

1. Introduction

This exercise is in fulfillment of the Community Rights Law of 2009, Section 2.4 (Procedure for Acquisition of Community Forest) that the Community Forest Land shall be identified, validated and recommended by the Forestry Development Authority for approval by the Community Forestry Management Body.

Hence, the nine (9) steps which a community must complete before acquiring Community Forest status that also include validation and subsequent demarcation must be observed.

Having concluded Socio-Economic Survey (SES) for Tonglay Community Forest, the GIS & Remote Sensing Division was mandated to conduct validation exercise on the location, metes and bounds, the actual shape and size of the above name community forest.

In light of the above, a team of technicians, in person of (Archielous G. Johnson and William D. Quayee) Inventory Officers, from the GIS Division were directed to carry out said task for Fourteen (14) days. during which our technicians completed the validation exercise.

Below are findings from the validation exercise of Tonglay Community Forest, showing the location, relief, forest cover map, as well as the metes and bounds which is completed and available at the GIS Lab.

2. Findings

- ✓ Tonglay Community Forest lies within Latitude 310490 859640 North of the Equator and Longitude 310490 835866 West of the Greenwich Meridian.
- ✓ It has a total area of 19,593 hectares / 48,415 acres and is located in Kongba District, Gbarpolu County. (see figures 1, 2, & 3).
- ✓ That it does not overlap with any FDA Concession, Protected and Proposed Protected areas. (see figures 4)

3. Recommendation:

After carefully analyzing the data from the field, we are pleased to recommend that the 19,593 hectares / 48,415 acres be approved and awarded for the Tonglay Community Forest status.

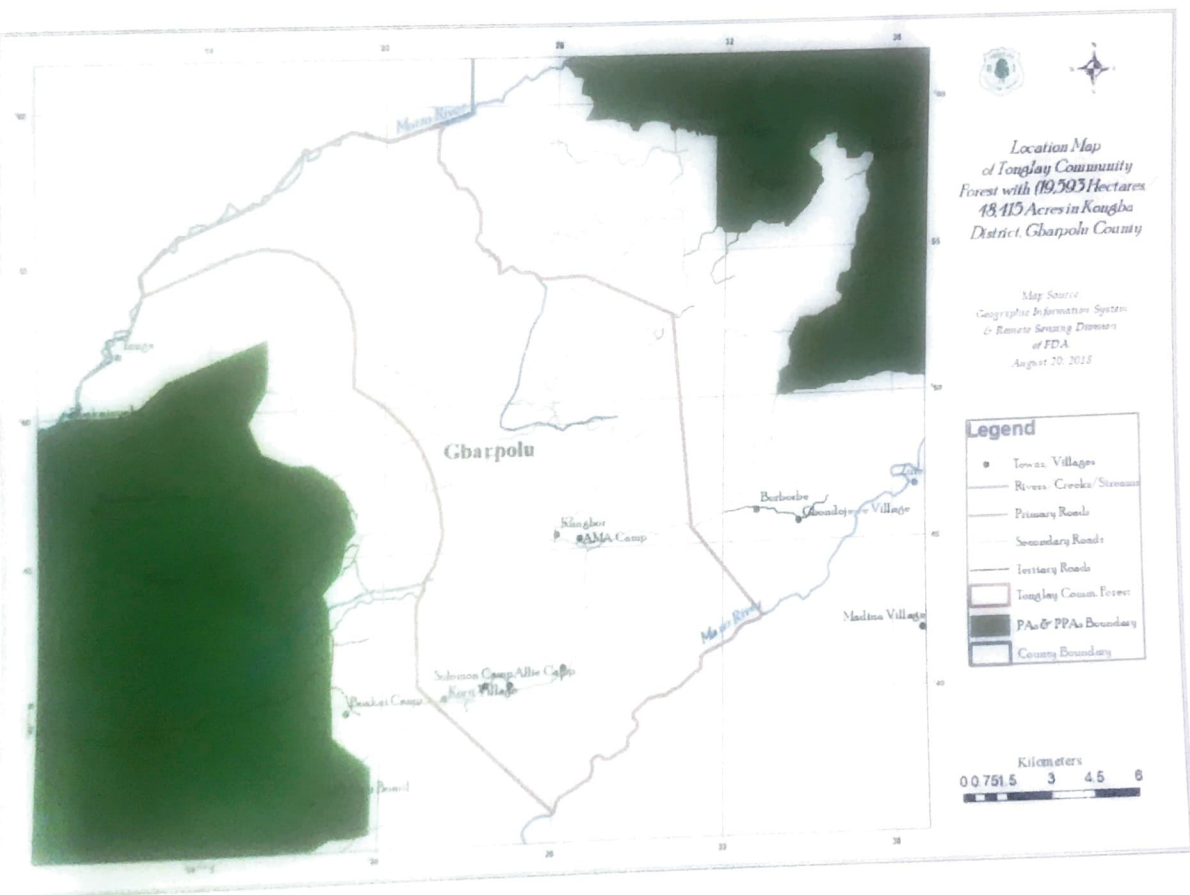
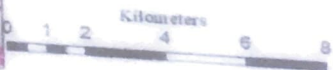
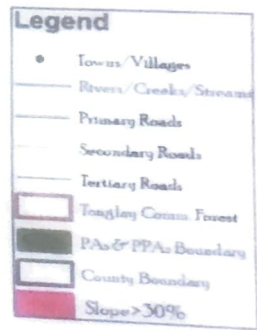
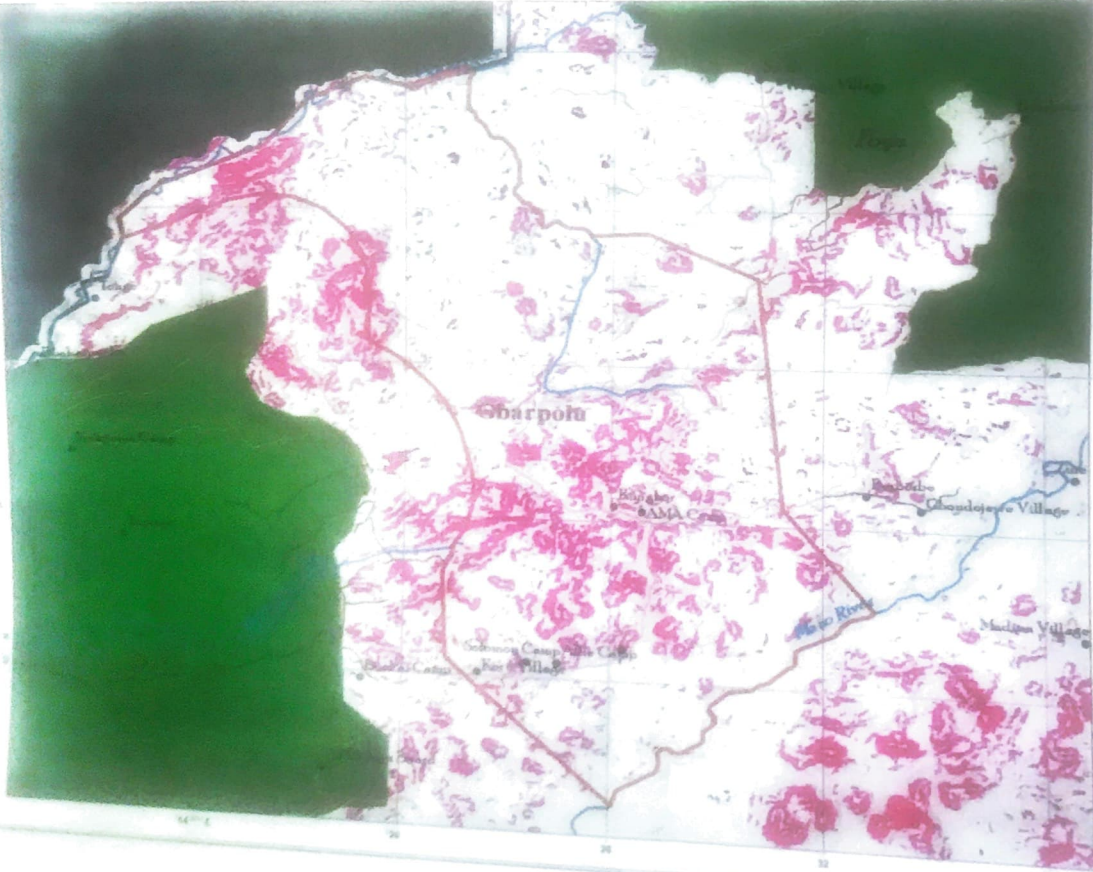


Figure 1: Location Map of Tonglay Community Forest

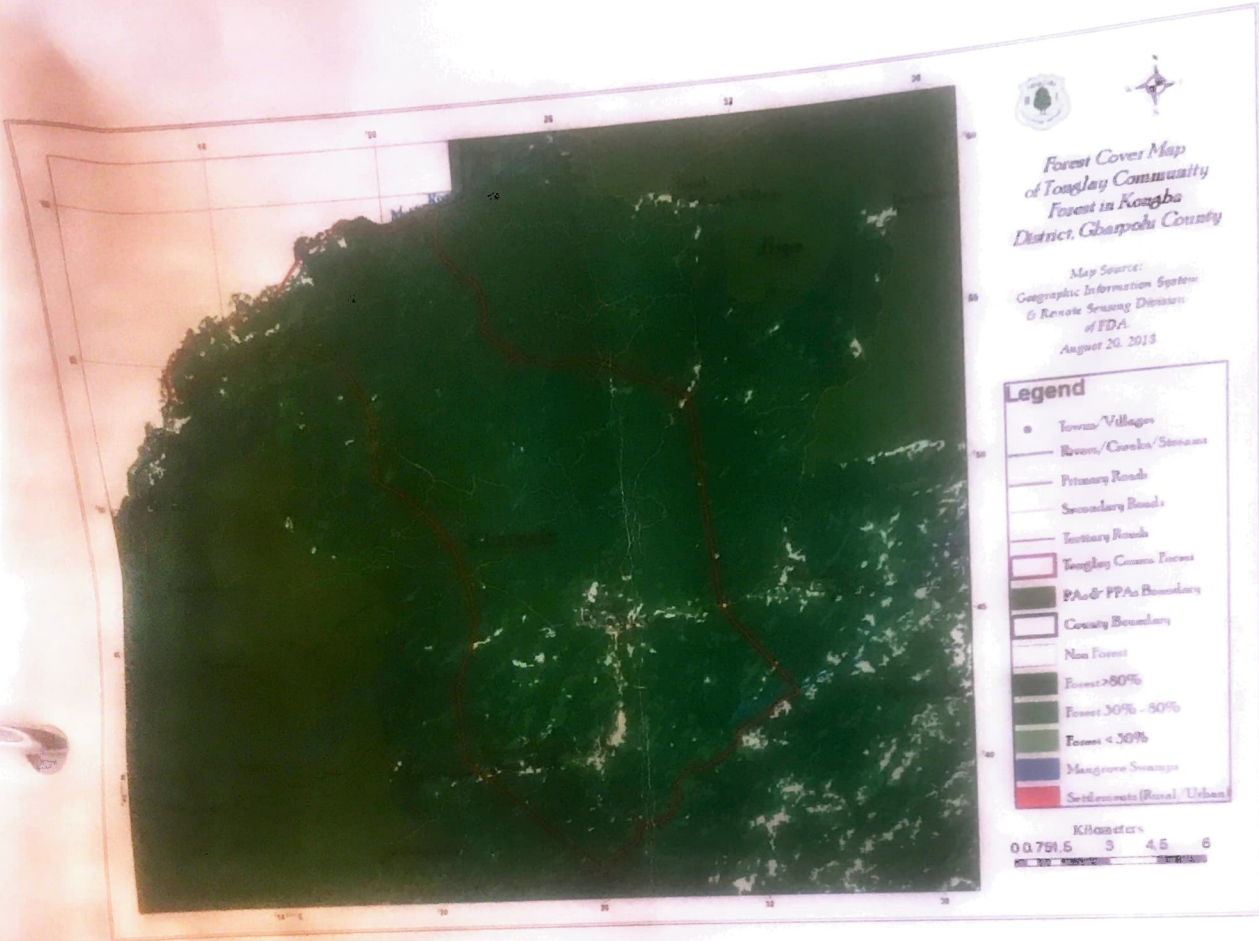


Relief & Hydrographic Map of Tonglay Community Forest in Kongba District, Gbarpolu County

Map Source:
Geographic Information System
& Remote Sensing Division
of FIDA.
August 20, 2018



Figures 2: Relief M



2. Forest Cover Map of Tonglay Community Forest